

1-15T MOTORIZED TROLLEY EXPLOSION

MOTORIZED TROLLEY B.O.M

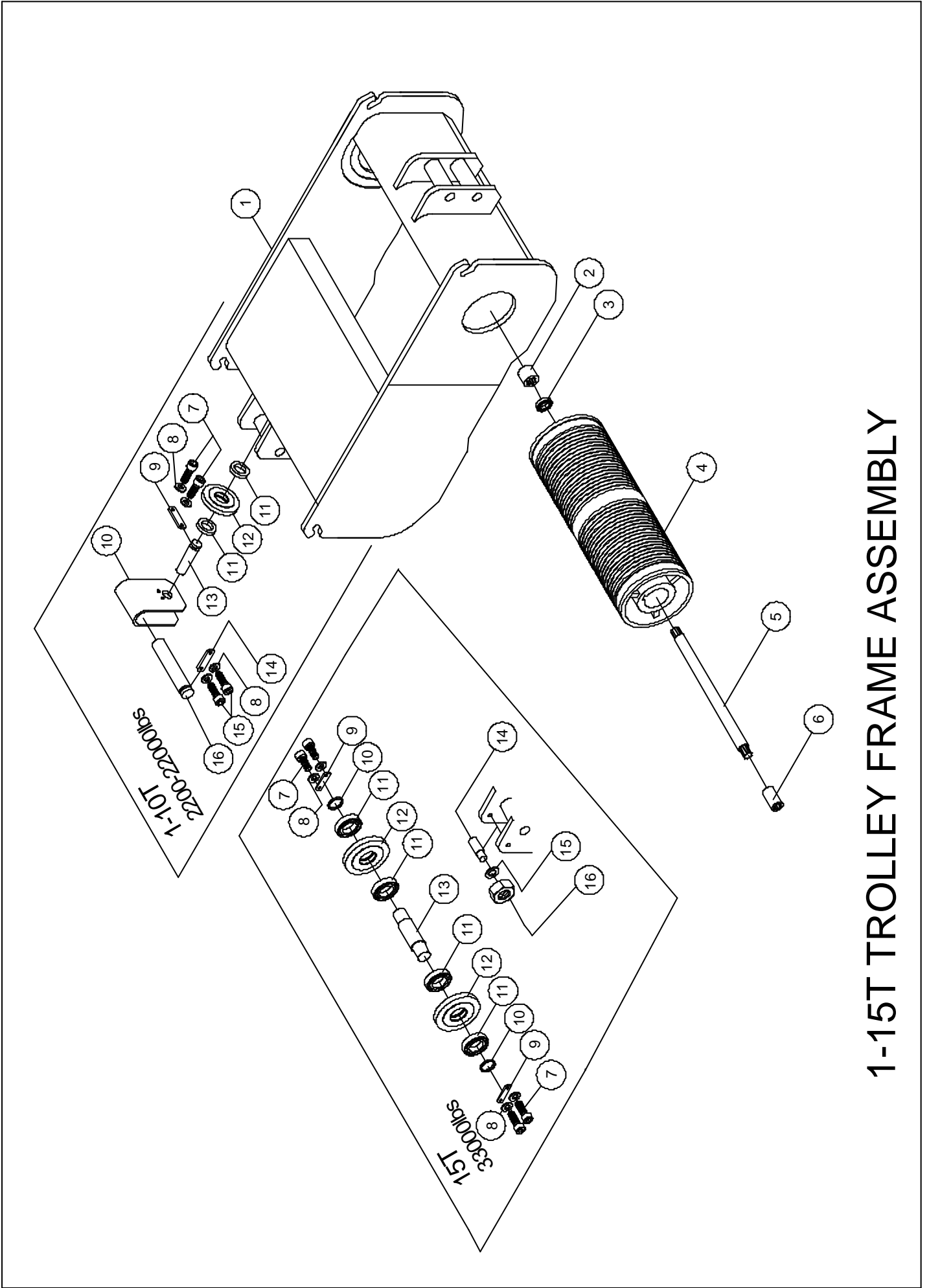
| NO. | PART NUMBER | DESCRIPTION | QTY | QTY | QTY | QTY |
|-----|-------------|---|-----------------|-----------------|-----------------|------------------|
| | | | 1T (2200lbs) | 2T (4400lbs) | 3T (6600lbs) | 5T (11000lbs) |
| 01 | 400450 | Hex. Recess Bolt <M10×1.5×35L> | 4 | 4 | | |
| | 400440 | Hex. Recess Bolt <M14×2.0×35L> | | | 4 | 4 |
| 02 | 400096 | Spring Washer <M10> | 4 | 4 | | |
| | 400651 | Spring Washer <M14> | | | 4 | 4 |
| 03 | 400759 | Bearing Housing <UCFL 204> | 2 | 2 | | |
| | 400760 | Bearing Housing <UCFL 206> | | | 2 | 2 |
| 04 | 264420 | Drive Frame Assembly Ass'y(Right) <t13> | 1 | | | |
| | 264412 | Drive Frame Assembly Ass'y(Right) <t13> | | 1 | | |
| | 264416 | Drive Frame Assembly Ass'y(Right) <t16> | | | 1 | 1 |
| 05 | 400313 | Bumper | 4 | 4 | 4 | 4 |
| 06 | 400424 | Hex. Recess Bolt <M8×1.25×16L> | 12 | 12 | | |
| | 400012 | Hex. Recess Bolt <M8×1.25×20L> | | | 12 | 12 |
| 07 | 400095 | Spring Washer <M8> | 12 | 12 | 12 | 12 |
| 08 | 202486 | Gear(A) <M3.5×40T×21L> | 2 | 2 | | |
| | 202490 | Gear(A) <M3.5×49T×21L> | | | 2 | 2 |
| 09 | 407830 | Bearing <6205 Z> | 8 | 8 | | |
| | 407808 | Bearing <6207 Z> | | | 8 | 8 |
| 10 | 202487 | Wheel(B) <ø119×49L> | 2 | 2 | | |
| | 202491 | Wheel(B) <ø143.5×59L> | | | 2 | 2 |
| 11 | 400192 | Retaining Ring <S-25> | 4 | 4 | | |
| | 400194 | Retaining Ring <S-35> | | | 4 | 4 |
| 12 | 101367 | Motor | 1 | | | |
| | 104953 | Reducing Gear Motor | | 1 | 1 | 1 |
| 13 | 201767 | Pinion <M3.5×12T 77L> | 1 | | | |
| | 201756 | Pinion <M3.5×18T 49L> | | 1 | 1 | 1 |
| 14 | 264419 | Drive Frame Assembly Ass'y(Left) <t13> | 1 | | | |
| | 264411 | Drive Frame Assembly Ass'y(Left) <t13> | | 1 | | |
| | 264415 | Drive Frame Assembly Ass'y(Left) <t16> | | | 1 | 1 |
| 15 | 404901 | Bolt <M10×1.5×10L> | 8 | 8 | 8 | 8 |
| 16 | 202011 | Hex. Nut <1 1/4"×7UNC> | 8 | 8 | | |
| | 202012 | Hex. Nut <1 1/2"×6UNC> | | | 8 | 8 |
| 17 | 400105 | Spring Washer <1 1/4"> | 8 | 8 | | |
| | 400106 | Spring Washer <1 1/2"> | | | 8 | 8 |
| 18 | 203223 | Spacer <ø54×ø34×1/8"> | 48 | 48 | | |
| 19 | 269911 | Spacer Sleeve <ø50.8×ø34×1/4"> | 112 | 112 | | |
| | 269912 | Spacer Sleeve <ø60×ø40×1/4"> | | | 152 | 152 |

MOTORIZED TROLLEY B.O.M

| NO. | PART NUMBER | DESCRIPTION | QTY | QTY | QTY |
|-----|-------------|---|--------------------|-------------------|-------------------|
| | | | 7.5T (16500lbs) | 10T (22000lbs) | 15T (33000lbs) |
| 01 | 400441 | Hex. Recess Bolt <M14×2.0×45L> | 4 | 4 | 4 |
| 02 | 400651 | Spring Washer <M14> | 4 | 4 | 4 |
| 03 | 400761 | Bearing Housing <UCFL 207> | 2 | 2 | |
| | 400747 | Bearing Housing <UCFL 208> | | | 2 |
| 04 | 264414 | Drive Frame Assembly Ass'y(Right) <t22> | 1 | | |
| | 264418 | Drive Frame Assembly Ass'y(Right) <t25> | | 1 | |
| | 264422 | Drive Frame Assembly Ass'y(Right) <t25> | | | 1 |
| 05 | 400313 | Bumper | 4 | 4 | 4 |
| 06 | 400013 | Hex. Recess Bolt <M8×1.25×25L> | 12 | 12 | |
| | 400431 | Hex. Recess Bolt <M10×1.5×30L> | | | 12 |
| 07 | 400095 | Spring Washer <M8> | 12 | 12 | |
| | 400096 | Spring Washer <M10> | | | 12 |
| 08 | 202492 | Gear(A) <M3.5×57T×28L> | 2 | | |
| | 274301 | Gear(A) <M3.5×64T×28L> | | 2 | |
| | 274302 | Gear(A) <M3.5×71T×35L> | | | 2 |
| 09 | 407817 | Bearing <6307Z> | 8 | | |
| | 407825 | Bearing <6308Z> | | 8 | |
| | 407810 | Bearing <6211Z> | | | 8 |
| 10 | 202493 | Wheel(B) <ø178.5×60L> | 2 | | |
| | 274501 | Wheel(B) <ø203×60L> | | 2 | |
| | 274502 | Wheel(B) <ø217×60L> | | | 2 |
| 11 | 400195 | Retaining Ring <S-40> | 4 | 4 | |
| | 400909 | Retaining Ring <S-55> | | | 4 |
| 12 | 104939 | Reducing Motor | 1 | | |
| | 104963 | | | 1 | 1 |
| 13 | 201756 | Pinion<M3.5×18T 49L> | 1 | | |
| | 201679 | Pinion<M3.5×23T 63L> | | 1 | 1 |
| 14 | 264413 | Drive Frame Assembly Ass'y(Left) <t22> | 1 | | |
| | 264417 | Drive Frame Assembly Ass'y(Left) <t25> | | 1 | |
| | 264421 | Drive Frame Assembly Ass'y(Left) <t25> | | | 1 |

MOTROZIED TROLLEY B.O.M

| NO. | PART NUMBER | DESCRIPTION | QTY | QTY | QTY |
|-----|-------------|---------------------------------------|--------------------|-------------------|-------------------|
| | | | 7.5T (16500lbs) | 10T (22000lbs) | 15T (33000lbs) |
| 15 | 404901 | Bolt <M10×1.5×10L> | 8 | 8 | |
| | 404903 | Bolt <M12×1.75×15L> | | | 8 |
| 16 | 202010 | Hex. Nut<1 3/4"×5UNC> | 8 | 8 | |
| | 202017 | Hex. Nut<2 1/4"×4 1/2UNC> | | | 8 |
| 17 | 400104 | Spring Washer<1 3/4"> | 8 | 8 | |
| | 405303 | Spring Washer<2 1/4"> | | | 8 |
| 18 | 203223 | Spacer<ø54×ø34×1/8"> | | | |
| 19 | 269913 | Spacer Sleeve<ø70×ø47×1/4"> | 144 | 144 | |
| | 269908 | Spacer Sleeve<ø82.5×ø62×12.7L> | | | 144 |
| 20 | 264252 | Pinion Shaft Tube<ø48×ø35×31.5L> | 1 | 1 | |
| | 264254 | Pinion Shaft Tube<ø55×ø40×30L> | | | 1 |
| 21 | 202507 | Motor Pinion <M3.5×33T×43L> | 2 | 2 | |
| | 202485 | Motor Pinion <M3.5×37T×50L> | | | 2 |
| 22 | 400194 | Retaining Ring <S-35> | 3 | | |
| | 400195 | Retaining Ring <S-40> | | 3 | 3 |
| 23 | 400978 | Key <t10×10×40L> | 2 | 2 | 2 |
| 24 | 269802 | Pinion Shaft <ø35×650 > | 1 | 1 | |
| | 269804 | Pinion Shaft <ø40×650> | | | 1 |
| 25 | 408306 | Mounting Bolts<1 3/4" ×5UNC×680L> | 4 | 4 | |
| | 408309 | Mounting Bolts<2 1/4" ×4 1/2UNC×680L> | | | 4 |
| 26 | 264614 | Plain Frame Ass'y(Right)<t22> | 1 | | |
| | 264618 | Plain Frame Ass'y(Right)<t25> | | 1 | |
| | 264622 | Plain Frame Ass'y(Right)<t25> | | | 1 |
| 27 | 203135 | Plain Wheel<ø178.5×60L> | 2 | | |
| | 203136 | Plain Wheel<ø203×60L> | | 2 | |
| | 276971 | Plain Wheel<ø217×60L> | | | 2 |
| 28 | 264613 | Plain Frame Ass'y(Left)<t22> | 1 | | |
| | 264617 | Plain Frame Ass'y(Left)<t25> | | 1 | |
| | 264621 | Plain Frame Ass'y(Left)<t25> | | | 1 |



TROLLEY FRAME ASSEMBLY B.O.M

| NO. | PART NUMBER | DESCRIPTION | QTY 1T (2200lbs) | | |
|-----|-------------|---------------------------------|---------------------|------|------|
| | | | 20ft | 30ft | 40ft |
| 01 | 266001 | Hoist Frame | 1 | | |
| | 266002 | | | 1 | |
| | 266003 | | | | 1 |
| 02 | 205469 | Coupling <ø34×ø16×51L> | 1 | 1 | 1 |
| 03 | 407838 | Bearing <6212ZZ> | 1 | 1 | 1 |
| 04 | 266801 | Drum <ø188×ø166×540L> | 1 | | |
| | 266802 | Drum <ø188×ø166×700L> | | 1 | |
| | 266803 | Drum <ø188×ø166×860L> | | | 1 |
| 05 | 263011 | Drum Shaft <ø25×364L> | 1 | | |
| | 263012 | Drum Shaft <ø25×524L> | | 1 | |
| | 263013 | Drum Shaft <ø25×669L> | | | 1 |
| 06 | 205469 | Coupling <ø34×ø16×51L> | 1 | 1 | 1 |
| 07 | 405011 | Hex. Recess Bolt <M8×1.25×15L> | 2 | 2 | 2 |
| 08 | 400095 | Spring Washer <M8> | 4 | 4 | 4 |
| 09 | 200636 | Keeper <ø8.5 P28 t6.0×25×50L> | 1 | 1 | 1 |
| 10 | 270201 | Link Equalizer <t6×100×127L> | 1 | 1 | 1 |
| 11 | 205239 | Washer <ø40×ø29×3L> | 2 | 2 | 2 |
| 12 | 263551 | Equalizer Sheave <ø105×ø28 t31> | 1 | 1 | 1 |
| 13 | 207553 | Sheave Axle <ø28×79L> | 1 | 1 | 1 |
| 14 | 269551 | Load Key Plate <t6.0×25×80L> | 1 | 1 | 1 |
| 15 | 405011 | Hex. Recess Bolt <M8×1.25×15L> | 2 | 2 | 2 |
| 16 | 205470 | Load Axle <ø28×165L> | 1 | 1 | 1 |
| | | | | | |
| | | | | | |
| | | | | | |

TROLLEY FRAME ASSEMBLY B.O.M

| NO. | PART NUMBER | DESCRIPTION | QTY 2T (4400lbs) | | |
|-----|-------------|---------------------------------|---------------------|------|------|
| | | | 20ft | 30ft | 40ft |
| 01 | 266006 | Hoist Frame | 1 | | |
| | 266007 | | | 1 | |
| | 266008 | | | | 1 |
| 02 | 205466 | Coupling(A) <ø34×ø21×61L> | 1 | 1 | 1 |
| 03 | 407838 | Bearing <6212ZZ> | 1 | 1 | 1 |
| 04 | 266806 | Drum <ø188×ø166×640L> | 1 | | |
| | 266807 | Drum <ø188×ø166×850L> | | 1 | |
| | 266808 | Drum <ø188×ø166×1060L> | | | 1 |
| 05 | 263016 | Drum Shaft <ø30×459L> | 1 | | |
| | 263017 | Drum Shaft <ø30×669L> | | 1 | |
| | 263018 | Drum Shaft <ø30×879L> | | | 1 |
| 06 | 205469 | Coupling <ø34×ø16×51L> | 1 | 1 | 1 |
| 07 | 405011 | Hex. Recess Bolt <M8×1.25×15L> | 2 | 2 | 2 |
| 08 | 400095 | Spring Washer <M8> | 4 | 4 | 4 |
| 09 | 200636 | Keeper <ø8.5 P28 t6.0×25×50L> | 1 | 1 | 1 |
| 10 | 270201 | Link Equalizer <t6×100×127L> | 1 | 1 | 1 |
| 11 | 205239 | Washer <ø40×ø29×3L> | 2 | 2 | 2 |
| 12 | 263551 | Equalizer Sheave <ø105×ø28 t31> | 1 | 1 | 1 |
| 13 | 207553 | Sheave Axle <ø28×79L> | 1 | 1 | 1 |
| 14 | 269551 | Load Key Plate <t6.0×25×80L> | 1 | 1 | 1 |
| 15 | 405011 | Hex. Recess Bolt <M8×1.25×15L> | 2 | 2 | 2 |
| 16 | 205470 | Load Axle <ø28×165L> | 1 | 1 | 1 |

TROLLEY FRAME ASSEMBLY B.O.M

| NO. | PART NUMBER | DESCRIPTION | QTY 3T (6600lbs) | | |
|-----|-------------|--|---------------------|------|------|
| | | | 20ft | 30ft | 40ft |
| 01 | 266011 | Hoist Frame | 1 | | |
| | 266012 | | | 1 | |
| | 266013 | | | | 1 |
| 02 | 205466 | Coupling(A) < $\phi 34 \times \phi 21 \times 61L$ > | 1 | 1 | 1 |
| 03 | 407838 | Bearing <6212ZZ> | 1 | 1 | 1 |
| 04 | 266811 | Drum < $\phi 218 \times \phi 194 \times 655L$ > | 1 | | |
| | 266812 | Drum < $\phi 218 \times \phi 194 \times 855L$ > | | 1 | |
| | 266813 | Drum < $\phi 218 \times \phi 194 \times 1112L$ > | | | 1 |
| 05 | 263021 | Drum Shaft < $\phi 30 \times 497L$ > | 1 | | |
| | 263022 | Drum Shaft < $\phi 30 \times 697L$ > | | 1 | |
| | 263023 | Drum Shaft < $\phi 30 \times 849L$ > | | | 1 |
| 06 | 205466 | Coupling(A) < $\phi 34 \times \phi 21 \times 61L$ > | 1 | 1 | 1 |
| 07 | 400012 | Hex. Recess Bolt <M8 \times 1.25 \times 20L> | 2 | 2 | 2 |
| 08 | 400095 | Spring Washer <M8> | 4 | 4 | 4 |
| 09 | 200636 | Keeper < $\phi 8.5$ P28 t6.0 \times 25 \times 50L> | 1 | 1 | 1 |
| 10 | 270202 | Link Equalizer <t8 \times 120 \times 170> | 1 | 1 | 1 |
| 11 | 205239 | Washer < $\phi 40 \times \phi 29 \times 3L$ > | 2 | 2 | 2 |
| 12 | 205212 | Equalizer Sheave < $\phi 152 \times \phi 28$ t40> | 1 | 1 | 1 |
| 13 | 205221 | Sheave Axle < $\phi 28 \times 109L$ > | 1 | 1 | 1 |
| 14 | 269551 | Load Key Plate <t6.0 \times 25 \times 80> | 1 | 1 | 1 |
| 15 | 400012 | Hex. Recess Bolt <M8 \times 1.25 \times 20L> | 2 | 2 | 2 |
| 16 | 270502 | Load Axle < $\phi 35 \times 200L$ > | 1 | 1 | 1 |
| | | | | | |
| | | | | | |
| | | | | | |

TROLLEY FRAME ASSEMBLY B.O.M

| NO. | PART NUMBER | DESCRIPTION | QTY 5T (11000lbs) | | |
|-----|-------------|--------------------------------|----------------------|------|------|
| | | | 20ft | 30ft | 40ft |
| 01 | 266016 | Hoist Frame | 1 | | |
| | 266017 | | | 1 | |
| | 266018 | | | | 1 |
| 02 | 205466 | Drum Coupling(A) <ø34×ø21×61L> | 1 | 1 | 1 |
| 03 | 407838 | Bearing <6212ZZ> | 1 | 1 | 1 |
| 04 | 266811 | Drum <ø218×ø194×655L> | 1 | | |
| | 266812 | Drum <ø218×ø194×855L> | | 1 | |
| | 266813 | Drum <ø218×ø194×1007L> | | | 1 |
| 05 | 263026 | Drum Shaft <ø30×470L> | 1 | | |
| | 263027 | Drum Shaft <ø30×670L> | | 1 | |
| | 263028 | Drum Shaft <ø30×822L> | | | 1 |
| 06 | 205467 | Drum Coupling(B) <ø34×ø21×73L> | 1 | 1 | 1 |
| 07 | 400012 | Hex. Recess Bolt <M8×1.25×20L> | 2 | 2 | 2 |
| 08 | 400095 | Spring Washer <M8> | 4 | 4 | 4 |
| 09 | 200636 | Keeper <ø8.5 P28 t6.0×25×50L> | 1 | 1 | 1 |
| 10 | 270202 | Link Equalizer <t8×120×170L> | 1 | 1 | 1 |
| 11 | 205239 | Washer <ø40×ø29×3L> | 2 | 2 | 2 |
| 12 | 205212 | Equalizer Shave <ø152×ø28 t40> | 1 | 1 | 1 |
| 13 | 205221 | Sheave Axle <ø28×109L> | 1 | 1 | 1 |
| 14 | 269551 | Load Key Plate <t6.0×25×80L> | 1 | 1 | 1 |
| 15 | 400012 | Hex. Recess Bolt <M8×1.25×20L> | 2 | 2 | 2 |
| 16 | 270502 | Load Axle <ø35×200L> | 1 | 1 | 1 |
| | | | | | |
| | | | | | |

TROLLEY FRAME ASSEMBLY B.O.M

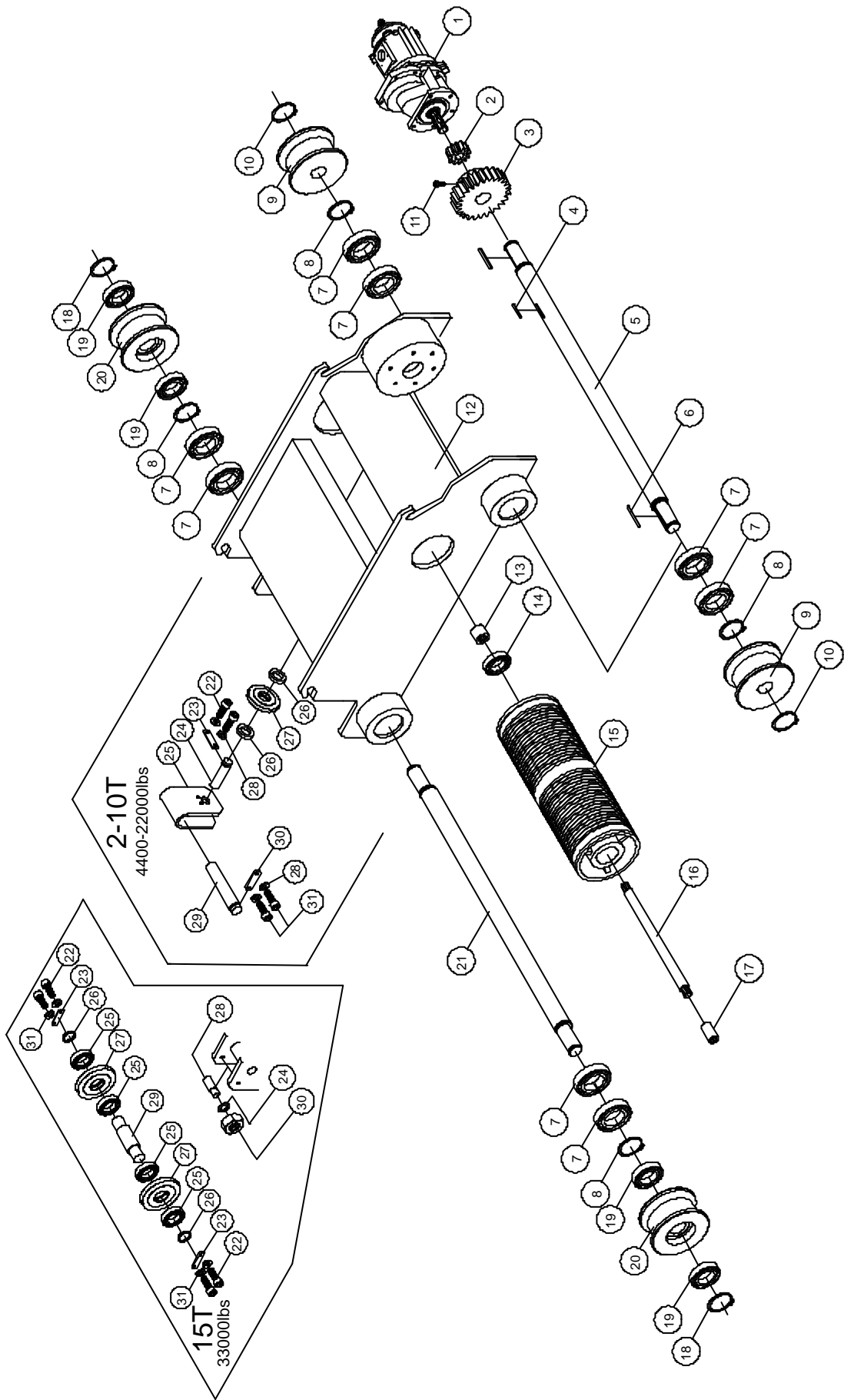
| NO. | PART NUMBER | DESCRIPTION | QTY 7.5T (16500lbs) | | |
|-----|-------------|---------------------------------|------------------------|------|------|
| | | | 20ft | 30ft | 40ft |
| 01 | 266026 | Hoist Frame | 1 | | |
| | 266027 | | | 1 | |
| | 266028 | | | | 1 |
| 02 | 205467 | Coupling(B) <ø34×ø21×73L> | 1 | 1 | 1 |
| 03 | 407814 | Bearing <6220 ZZ> | 1 | 1 | 1 |
| 04 | 266871 | Drum <ø271×ø243×712L> | 1 | | |
| | 266872 | Drum <ø271×ø243×912L> | | 1 | |
| | 266873 | Drum <ø271×ø243×1112L> | | | 1 |
| 05 | 263031 | Drum Shaft <ø35×475L> | 1 | | |
| | 263032 | Drum Shaft <ø35×675L> | | 1 | |
| | 263033 | Drum Shaft <ø35×875L> | | | 1 |
| 06 | 205468 | Coupling <ø48×ø28×62L> | 1 | 1 | 1 |
| 07 | 400012 | Hex. Recess Bolt <M8×1.25×20L> | 2 | 2 | 2 |
| 08 | 400095 | Spring Washer <M8> | 4 | 4 | 4 |
| 09 | 200636 | Keeper <ø8.5 P28 t6.0×25×50L> | 1 | 1 | 1 |
| 10 | 270203 | Link Equalizer <t8×140×230L> | 1 | 1 | 1 |
| 11 | 205238 | Washer <ø45×ø36×3L> | 2 | 2 | 2 |
| 12 | 205244 | Equalizer Sheave <ø210×ø35 t50> | 1 | 1 | 1 |
| 13 | 205222 | Sheave Axle <ø35×119L> | 1 | 1 | 1 |
| 14 | 269551 | Load Key Plate <t6.0×25×80L> | 1 | 1 | 1 |
| 15 | 400013 | Hex. Recess Bolt <M8×1.25×25L> | 2 | 2 | 2 |
| 16 | 270503 | Load Axle <ø35×220L> | 1 | 1 | 1 |
| | | | | | |
| | | | | | |

TROLLEY FRAME ASSEMBLY B.O.M

| NO. | PART NUMBER | DESCRIPTION | QTY 10T (22000lbs) | | |
|-----|-------------|---------------------------------|-----------------------|------|------|
| | | | 20ft | 30ft | 40ft |
| 01 | 266026 | Hoist Frame | 1 | | |
| | 266027 | | | 1 | |
| | 266028 | | | | 1 |
| 02 | 205467 | Coupling(B) <ø34×ø21×73L> | 1 | 1 | 1 |
| 03 | 407814 | Bearing <6220 ZZ> | 1 | 1 | 1 |
| 04 | 266876 | Drum <ø296×ø261×712L> | 1 | | |
| | 266877 | Drum <ø296×ø261×912L > | | 1 | |
| | 266878 | Drum <ø296×ø261×1112L > | | | 1 |
| 05 | 263031 | Drum Shaft <ø35×475L> | 1 | | |
| | 263032 | Drum Shaft <ø35×675L> | | 1 | |
| | 263033 | Drum Shaft <ø35×875L> | | | 1 |
| 06 | 205468 | Coupling <ø48×ø28×62L> | 1 | 1 | 1 |
| 07 | 400012 | Hex. Recess Bolt <M8×1.25×20L> | 2 | 2 | 2 |
| 08 | 400095 | Spring Washer <M8> | 4 | 4 | 4 |
| 09 | 200636 | Keeper <ø8.5 P28 t6.0×25×50L> | 1 | 1 | 1 |
| 10 | 270203 | Link Equalizer <t8×140×230L> | 1 | 1 | 1 |
| 11 | 205238 | Washer <ø45×ø36×3L> | 2 | 2 | 2 |
| 12 | 205244 | Equalizer Sheave <ø210×ø35 t50> | 1 | 1 | 1 |
| 13 | 205222 | Sheave Axle <ø35×119L> | 1 | 1 | 1 |
| 14 | 269551 | Load Key Plate <t6.0×25×80L> | 1 | 1 | 1 |
| 15 | 400013 | Hex. Recess Bolt <M8×1.25×25L> | 2 | 2 | 2 |
| 16 | 270503 | Load Axle <ø35×220L> | 1 | 1 | 1 |
| | | | | | |
| | | | | | |
| | | | | | |

TROLLEY FRAME ASSEMBLY B.O.M

| NO. | PART NUMBER | DESCRIPTION | QTY 15T (33000lbs) | | |
|-----|-------------|--------------------------------|-----------------------|------|------|
| | | | 20ft | 30ft | 40ft |
| 01 | 266031 | Hoist Frame | 1 | | |
| | 266032 | | | 1 | |
| | 266033 | | | | 1 |
| 02 | 205467 | Drum Coupling(B) <ø34×ø21×73L> | 1 | 1 | 1 |
| 03 | 407814 | Bearing <6220 ZZ> | 1 | 1 | 1 |
| 04 | 266881 | Drum <ø296×ø261×971L> | 1 | | |
| | 266882 | Drum <ø296×ø261×1281L> | | 1 | |
| | 266883 | Drum <ø296×ø261×1591L> | | | 1 |
| 05 | 263041 | Drum Shaft <ø35×734L> | 1 | | |
| | 263042 | Drum Shaft <ø40×1044L> | | 1 | |
| | 263043 | Drum Shaft <ø45×1354L> | | | 1 |
| 06 | 205468 | Drum Coupling <ø48×ø28×62L> | 1 | 1 | 1 |
| 07 | 400461 | Hex. Recess Bolt <M20×2.5×35L> | 4 | 4 | 4 |
| 08 | 400099 | Spring Washer <M20> | 4 | 4 | 4 |
| 09 | 264055 | Keeper | 2 | 2 | 2 |
| 10 | 400920 | Retaining Ring <S-85> | 2 | 2 | 2 |
| 11 | 407803 | Bearing <6017 Z> | 4 | 4 | 4 |
| 12 | 263555 | Sheave <ø285×60L> | 2 | 2 | 2 |
| 13 | 263461 | Load Axle <ø95×424L> | 1 | 1 | 1 |
| 14 | 273641 | Guide Rope Bar | 4 | 4 | 4 |
| 15 | 400098 | Spring Washer <M16> | 4 | 4 | 4 |
| 16 | 400634 | Nut <M16×2.0> | 4 | 4 | 4 |
| | | | | | |
| | | | | | |



2-15T SADDLE FRAME EXPLOSION

SADDLE FRAME ASSEMBLY B.O.M

| NO. | PART NUMBER | DESCRIPTION | QTY 2T (4400lbs) | | |
|-----|-------------|-----------------------------------|---------------------|------|------|
| | | | 20ft | 30ft | 40ft |
| 01 | 104953 | Reducing Motor | 1 | 1 | 1 |
| 02 | 201757 | Pinion <M3.5×23T 49L> | 1 | 1 | 1 |
| 03 | 205187 | Trolley Drive Gear <M3.5×49T×45L> | 1 | 1 | 1 |
| 04 | 400969 | Key <t8×8×60L> | 1 | 1 | 1 |
| 05 | 265221 | Transmission Shaft <ø45×924L> | 1 | | |
| | 265222 | Transmission Shaft <ø45×1074L> | | 1 | |
| | 265223 | Transmission Shaft <ø45×1274L> | | | 1 |
| 06 | 400969 | Key <t8×8×60L> | 2 | 2 | 2 |
| 07 | 407820 | Bearing <6309 ZZ> | 4 | 4 | 4 |
| 08 | 400196 | Retaining Ring <S-45> | 4 | 4 | 4 |
| 09 | 205070 | Transmission Wheel <ø147×60L> | 2 | 2 | 2 |
| 10 | 400194 | Retaining Ring <S-35> | 2 | 2 | 2 |
| 11 | 400014 | Hex. Recess Bolt <M8×1.25×30L> | 1 | 1 | 1 |
| 12 | 266056 | Hoist Frame | 1 | | |
| | 266057 | | | 1 | |
| | 266058 | | | | 1 |
| 13 | 205466 | Coupling (A) <ø34×ø21×61L> | 1 | 1 | 1 |
| 14 | 407838 | Bearing <6212 ZZ> | 1 | 1 | 1 |
| 15 | 266806 | Drum <ø188×ø166×640L> | 1 | | |
| | 266807 | Drum <ø188×ø166×850L> | | 1 | |
| | 266808 | Drum <ø188×ø166×1060L> | | | 1 |
| 16 | 263016 | Drum Shaft <ø30×459L> | 1 | | |
| | 263017 | Drum Shaft <ø30×669L> | | 1 | |
| | 263018 | Drum Shaft <ø30×879L> | | | 1 |
| 17 | 205469 | Coupling <ø34×ø16×51L> | 1 | 1 | 1 |
| 18 | 400194 | Retaining Ring <S-35> | 2 | 2 | 2 |
| 19 | 407808 | Bearing <6207 Z> | 4 | 4 | 4 |
| 20 | 205170 | Plain Wheel <ø147×60L> | 2 | 2 | 2 |
| 21 | 265421 | Plain Shaft <ø45×924L> | 1 | | |
| | 265422 | Plain Shaft <ø45×1074L> | | 1 | |
| | 265423 | Plain Shaft <ø45×1274L> | | | 1 |
| 22 | 405011 | Hex. Recess Bolt <M8×1.25×15L> | 2 | 2 | 2 |
| 23 | 200636 | Keeper <ø8.5 P28 t6.0×25×50L> | 1 | 1 | 1 |
| 24 | 207553 | Sheave Axle <ø28×79L> | 1 | 1 | 1 |
| 25 | 270201 | Link Equalizer <t6×100×127> | 1 | 1 | 1 |
| 26 | 205239 | Washer <ø40×ø29×3L> | 2 | 2 | 2 |
| 27 | 263551 | Equalizer Sheave <ø105×ø28 t31> | 1 | 1 | 1 |
| 28 | 400095 | Spring Washer <M8> | 4 | 4 | 4 |
| 29 | 205470 | Load Axle <ø28×165L> | 1 | 1 | 1 |
| 30 | 269551 | Load Key Plate <t6.0×25×80L> | 1 | 1 | 1 |
| 31 | 405011 | Hex. Recess Bolt <M8×1.25×15L> | 2 | 2 | 2 |
| | | | | | |
| | | | | | |

SADDLE FRAME ASSEMBLY B.O.M

| NO. | PART NUMBER | DESCRIPTION | QTY 3T (6600lbs) | | |
|-----|-------------|-----------------------------------|---------------------|------|------|
| | | | 20ft | 30ft | 40ft |
| 01 | 104953 | Reducing Motor | 1 | 1 | 1 |
| 02 | 201756 | Pinion <M3.5×18T 49L> | 1 | 1 | 1 |
| 03 | 205186 | Trolley Drive Gear <M3.5×58T×45L> | 1 | 1 | 1 |
| 04 | 400969 | Key <t8×8×60L> | 1 | 1 | 1 |
| 05 | 205097 | Transmission Shaft <ø55×929L> | 1 | | |
| | 265212 | Transmission Shaft <ø55×1229L> | | 1 | |
| | 265228 | Transmission Shaft <ø55×1229L> | | | 1 |
| 06 | 400969 | Key <t8×8×60L> | 2 | 2 | 2 |
| 07 | 407810 | Bearing <6211 Z> | 8 | 8 | 8 |
| 08 | 400909 | Retaining Ring <S-55> | 4 | 4 | 4 |
| 09 | 205067 | Transmission Wheel <ø178×65L> | 2 | 2 | 2 |
| 10 | 400196 | Retaining Ring <S-45> | 2 | 2 | 2 |
| 11 | 400014 | Hex. Recess Bolt <M8×1.25×30L> | 1 | 1 | 1 |
| 12 | 266061 | Hoist Frame | 1 | | |
| | 266062 | | | 1 | |
| | 266063 | | | | 1 |
| 13 | 205466 | Coupling (A) <ø34×ø21×61L> | 2 | 2 | 1 |
| 14 | 407838 | Bearing <6212 ZZ> | 1 | 1 | 1 |
| 15 | 266811 | Drum <ø218×ø194×655L> | 1 | | |
| | 266812 | Drum <ø218×ø194×855L> | | 1 | |
| | 266813 | Drum <ø218×ø194×1007L> | | | 1 |
| 16 | 263021 | Drum Shaft <ø30×497L> | 1 | | |
| | 263022 | Drum Shaft <ø30×697L> | | 1 | |
| | 263023 | Drum Shaft <ø30×849L> | | | 1 |
| 17 | 205467 | Coupling B <ø34×ø21×73L> | | | 1 |
| 18 | 400195 | Retaining Ring <S-40> | 2 | 2 | 2 |
| 19 | 407831 | Bearing <6208 Z> | 4 | 4 | 4 |
| 20 | 205167 | Plain Wheel <ø178×65L> | 2 | 2 | 2 |
| 21 | 205137 | Plain Shaft <ø55×929L> | 1 | | |
| | 265412 | Plain Shaft <ø55×1229L> | | 1 | |
| | 265428 | Plain Shaft <ø55×1229L> | | | 1 |
| 22 | 400012 | Hex. Recess Bolt <M8×1.25×20L> | 2 | 2 | 2 |
| 23 | 200636 | Keeper <ø8.5 P28 t6.0×25×50L> | 1 | 1 | 1 |
| 24 | 205221 | Sheave Axle <ø28×109L> | 1 | 1 | 1 |
| 25 | 270202 | Link Equalizer <t8×120×170L> | 1 | 1 | 1 |
| 26 | 205239 | Washer <ø40×ø29×3L> | 2 | 2 | 2 |
| 27 | 205212 | Equalizer Sheave <ø152×ø28 t40> | 1 | 1 | 1 |
| 28 | 400095 | Spring Washer <M8> | 4 | 4 | 4 |
| 29 | 270502 | Load Axle <ø35×200L> | 1 | 1 | 1 |
| 30 | 269551 | Load Key Plate <t6.0×25×80L> | 1 | 1 | 1 |
| 31 | 400013 | Hex. Recess Bolt <M8×1.25×25L> | 2 | 2 | 2 |
| | | | | | |
| | | | | | |

SADDLE FRAME ASSEMBLY B.O.M

| NO. | PART NUMBER | DESCRIPTION | QTY 5T (11000lbs) | | |
|-----|-------------|-----------------------------------|----------------------|------|------|
| | | | 20ft | 30ft | 40ft |
| 01 | 104935 | Reducing Motor | 1 | 1 | 1 |
| 02 | 201757 | Pinion <M3.5×23T 49L> | 1 | 1 | 1 |
| 03 | 205186 | Trolley Drive Gear <M3.5×58T×45L> | 1 | 1 | 1 |
| 04 | 400969 | Key <t8×8×60L> | 1 | 1 | 1 |
| 05 | 205097 | Transmission Shaft <ø55×929L> | 1 | | |
| | 265212 | Transmission Shaft <ø55×1229L> | | 1 | |
| | 265228 | Transmission Shaft <ø55×1229L> | | | 1 |
| 06 | 400969 | Key <t8×8×60L> | 2 | 2 | 2 |
| 07 | 407810 | Bearing <6211 Z> | 8 | 8 | 8 |
| 08 | 400909 | Retaining Ring <S-55> | 4 | 4 | 4 |
| 09 | 205067 | Transmission Wheel <ø178×65L> | 2 | 2 | 2 |
| 10 | 400196 | Retaining Ring <S-45> | 2 | 2 | 2 |
| 11 | 400014 | Hex. Recess Bolt <M8×1.25×30L> | 1 | 1 | 1 |
| 12 | 266066 | Hoist Frame | 1 | | |
| | 266067 | | | 1 | |
| | 266068 | | | | 1 |
| 13 | 205466 | Coupling (A) <ø34×ø21×61L> | 1 | 1 | 1 |
| 14 | 407838 | Bearing <6212 ZZ> | 1 | 1 | 1 |
| 15 | 266811 | Drum <ø218×ø194×655L> | 1 | | |
| | 266812 | Drum <ø218×ø194×855L> | | 1 | |
| | 266813 | Drum <ø218×ø194×1007L> | | | 1 |
| 16 | 263026 | Drum Shaft <ø30×470L> | 1 | | |
| | 263027 | Drum Shaft <ø30×670L> | | 1 | |
| | 263028 | Drum Shaft <ø30×822L> | | | 1 |
| 17 | 205467 | Coupling (B) <ø34×ø21×73L> | 1 | 1 | 1 |
| 18 | 400195 | Retaining Ring <S-40> | 2 | 2 | 2 |
| 19 | 407831 | Bearing <6208 Z> | 4 | 4 | 4 |
| 20 | 205167 | Plain Wheel <ø178×65L> | 2 | 2 | 2 |
| 21 | 205137 | Plain Shaft <ø55×929L> | 1 | | |
| | 265412 | Plain Shaft <ø55×1229L> | | 1 | |
| | 265428 | Plain Shaft <ø55×1229L> | | | 1 |
| 22 | 400012 | Hex. Recess Bolt <M8×1.25×20L> | 2 | 2 | 2 |
| 23 | 200636 | Keeper <ø8.5 P28 T6.0×25×50L> | 1 | 1 | 1 |
| 24 | 205221 | Sheave Axle <ø28×109L> | 1 | 1 | 1 |
| 25 | 270202 | Link Equalizer <t8×120×170L> | 1 | 1 | 1 |
| 26 | 205239 | Washer <ø40×ø29×3L> | 2 | 2 | 2 |
| 27 | 205212 | Equalizer Sheave <ø152×ø28 t40> | 1 | 1 | 1 |
| 28 | 400095 | Spring Washer <M8> | 4 | 4 | 4 |
| 29 | 270502 | Load Axle <ø35×200L> | 1 | 1 | 1 |
| 30 | 269551 | Load Key Plate <t6.0×25×80L> | 1 | 1 | 1 |
| 31 | 400013 | Hex. Recess Bolt <M8×1.25×25L> | 2 | 2 | 2 |
| | | | | | |
| | | | | | |

SADDLE FRAME ASSEMBLY B.O.M

| NO. | PART NUMBER | DESCRIPTION | QTY 7.5T (16500lbs) | | |
|-----|-------------|-----------------------------------|------------------------|------|------|
| | | | 20ft | 30ft | 40ft |
| 01 | 104939 | Reducing Motor | 1 | 1 | 1 |
| 02 | 201678 | Pinion <M3.5×20T 49L> | 1 | 1 | 1 |
| 03 | 205186 | Trolley Drive Gear <M3.5×58T×45L> | 1 | 1 | 1 |
| 04 | 400969 | Key <t8×8×60L> | 1 | 1 | 1 |
| 05 | 265236 | Transmission Shaft <ø55×1254L> | 1 | | |
| | 265214 | Transmission Shaft <ø55×1254L> | | 1 | |
| | 265238 | Transmission Shaft <ø55×1404L> | | | 1 |
| 06 | 400969 | Key <t8×8×60L> | 2 | 2 | 2 |
| 07 | 407834 | Bearing <6311Z> | 8 | 8 | 8 |
| 08 | 400909 | Retaining Ring <S-55> | 4 | 4 | 4 |
| 09 | 205073 | Transmission Wheel <ø196×90L> | 2 | 2 | 2 |
| 10 | 400196 | Retaining Ring <S-45> | 2 | 2 | 2 |
| 11 | 400014 | Hex. Recess Bolt <M8×1.25×30L> | 1 | 1 | 1 |
| 12 | 266076 | Hoist Frame | 1 | | |
| | 266077 | | | 1 | |
| | 266078 | | | | 1 |
| 13 | 205467 | Coupling (B) <ø34×ø21×73L> | 1 | 1 | 1 |
| 14 | 407814 | Bearing <6220 ZZ> | 1 | 1 | 1 |
| 15 | 266871 | Drum <ø271×ø243×712L> | 1 | | |
| | 266872 | Drum <ø271×ø243×912L> | | 1 | |
| | 266873 | Drum <ø271×ø243×1112L> | | | 1 |
| 16 | 263031 | Drum Shaft <ø35×475L> | 1 | | |
| | 263032 | Drum Shaft <ø35×675L> | | 1 | |
| | 263033 | Drum Shaft <ø35×875L> | | | 1 |
| 17 | 205468 | Coupling <ø48×ø28×62L> | 1 | 1 | 1 |
| 18 | 400196 | Retaining Ring <S-45> | 2 | 2 | 2 |
| 19 | 407826 | Bearing <6309Z> | 4 | 4 | 4 |
| 20 | 205173 | Plain Wheel <ø196×90L> | 2 | 2 | 2 |
| 21 | 265436 | Plain Shaft <ø55×1254L> | 1 | | |
| | 265414 | Plain Shaft <ø55×1254L> | | 1 | |
| | 265438 | Plain Shaft <ø55×1404L> | | | 1 |
| 22 | 400012 | Hex. Recess Bolt <M8×1.25×20L> | 2 | 2 | 2 |
| 23 | 200636 | Keeper <ø8.5 P28 t6.0×25×50L> | 1 | 1 | 1 |
| 24 | 205222 | Sheave Axle <ø35×119L> | 1 | 1 | 1 |
| 25 | 270203 | Link Equalizer <t8×140×230L> | 1 | 1 | 1 |
| 26 | 205238 | Washer <ø45×ø36×3L> | 2 | 2 | 2 |
| 27 | 205244 | Equalizer Sheave <ø210×35 t50> | 1 | 1 | 1 |
| 28 | 400095 | Spring Washer <M8> | 4 | 4 | 4 |
| 29 | 270503 | Load Axle <ø35×220L> | 1 | 1 | 1 |
| 30 | 269551 | Load Key Plate <t6.0×25×80L> | 1 | 1 | 1 |
| 31 | 400013 | Hex. Recess Bolt <M8×1.25×25L> | 2 | 2 | 2 |
| | | | | | |
| | | | | | |

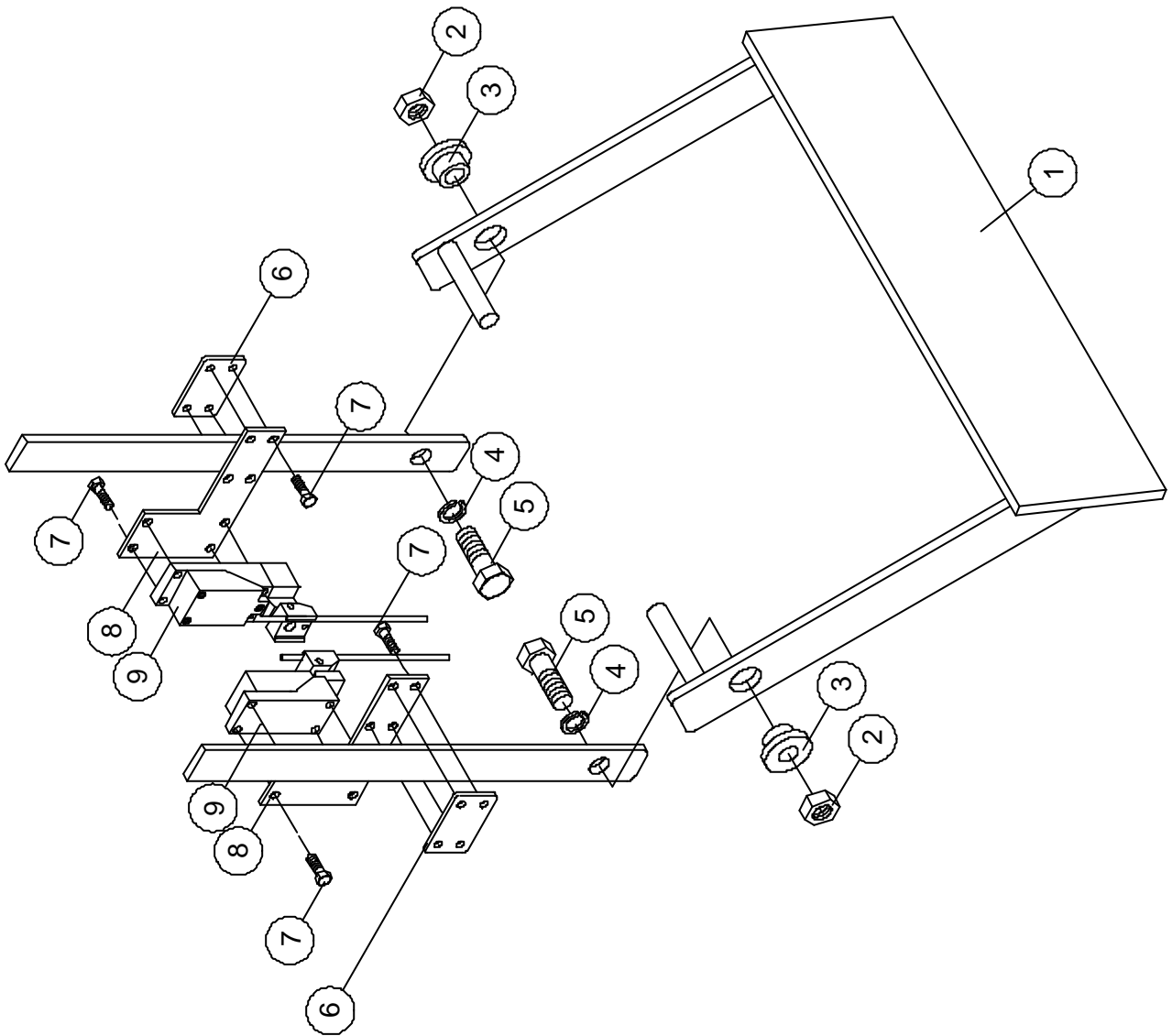
SADDLE FRAME ASSEMBLY B.O.M

| NO. | PART NUMBER | DESCRIPTION | QTY 10T (22000lbs) | | |
|-----|-------------|-----------------------------------|-----------------------|------|------|
| | | | 20ft | 30ft | 40ft |
| 01 | 104963 | Reducing Motor | 1 | 1 | 1 |
| 02 | 201679 | Pinion <M3.5×23T 63L> | 1 | 1 | 1 |
| 03 | 205181 | Trolley Drive Gear <M3.5×65T×45L> | 1 | 1 | 1 |
| 04 | 400969 | Key <t8×8×60L> | 1 | 1 | 1 |
| 05 | 265236 | Transmission Shaft <ø55×1254L> | 1 | | |
| | 265214 | Transmission Shaft <ø55×1254L> | | 1 | |
| | 265238 | Transmission Shaft <ø55×1404L> | | | 1 |
| 06 | 400969 | Key <t8×8×60L> | 2 | 2 | 2 |
| 07 | 407834 | Bearing <6311 Z> | 8 | 8 | 8 |
| 08 | 400909 | Retaining Ring <S-55> | 4 | 4 | 4 |
| 09 | 205073 | Transmission Wheel <ø196×90L> | 2 | 2 | 2 |
| 10 | 400196 | Retaining Ring <S-45> | 2 | 2 | 2 |
| 11 | 400014 | Hex. Recess Bolt <M8×1.25×30L> | 1 | 1 | 1 |
| 12 | 266076 | Hoist Frame | 1 | | |
| | 266077 | | | 1 | |
| | 266078 | | | | 1 |
| 13 | 205467 | Coupling (B) <ø34×ø21×73L> | 1 | 1 | 1 |
| 14 | 407814 | Bearing <6220 ZZ> | 1 | 1 | 1 |
| 15 | 266876 | Drum <ø296×ø261×712L> | 1 | | |
| | 266877 | Drum <ø296×ø261×912L> | | 1 | |
| | 266878 | Drum <ø296×ø261×1112L> | | | 1 |
| 16 | 263031 | Drum Shaft <ø35×475L> | 1 | | |
| | 263032 | Drum Shaft <ø35×675L> | | 1 | |
| | 263033 | Drum Shaft <ø35×875L> | | | 1 |
| 17 | 205468 | Coupling <ø48×ø28×62L> | 1 | 1 | 1 |
| 18 | 400196 | Retaining Ring <S-45> | 2 | 2 | 2 |
| 19 | 407826 | Bearing <6309 Z> | 4 | 4 | 4 |
| 20 | 205173 | Plain Wheel <ø196×90L> | 2 | 2 | 2 |
| 21 | 265436 | Plain Shaft <ø55×1254L> | 1 | | |
| | 265414 | Plain Shaft <ø55×1254L> | | 1 | |
| | 265438 | Plain Shaft <ø55×1404L> | | | 1 |
| 22 | 400012 | Hex. Recess Bolt <M8×1.25×20L> | 2 | 2 | 2 |
| 23 | 200636 | Keeper <ø8.5 P28 t6.0×25×50L> | 1 | 1 | 1 |
| 24 | 205222 | Sheave Axle <ø35×119L> | 1 | 1 | 1 |
| 25 | 270203 | Link Equalizer <t8×140×230L> | 1 | 1 | 1 |
| 26 | 205238 | Washer <ø45×ø36×3L> | 2 | 2 | 2 |
| 27 | 205244 | Equalizer Sheave <ø210×ø35 t50> | 1 | 1 | 1 |
| 28 | 400095 | Spring Washer <M8> | 4 | 4 | 4 |
| 29 | 270503 | Load Axle <ø35×220L> | 1 | 1 | 1 |
| 30 | 269551 | Load Key Plate <t6.0×25×80L> | 1 | 1 | 1 |
| 31 | 400013 | Hex. Recess Bolt <M8×1.25×25L> | 2 | 2 | 2 |
| | | | | | |
| | | | | | |

SADDLE FRAME ASSEMBLY B.O.M

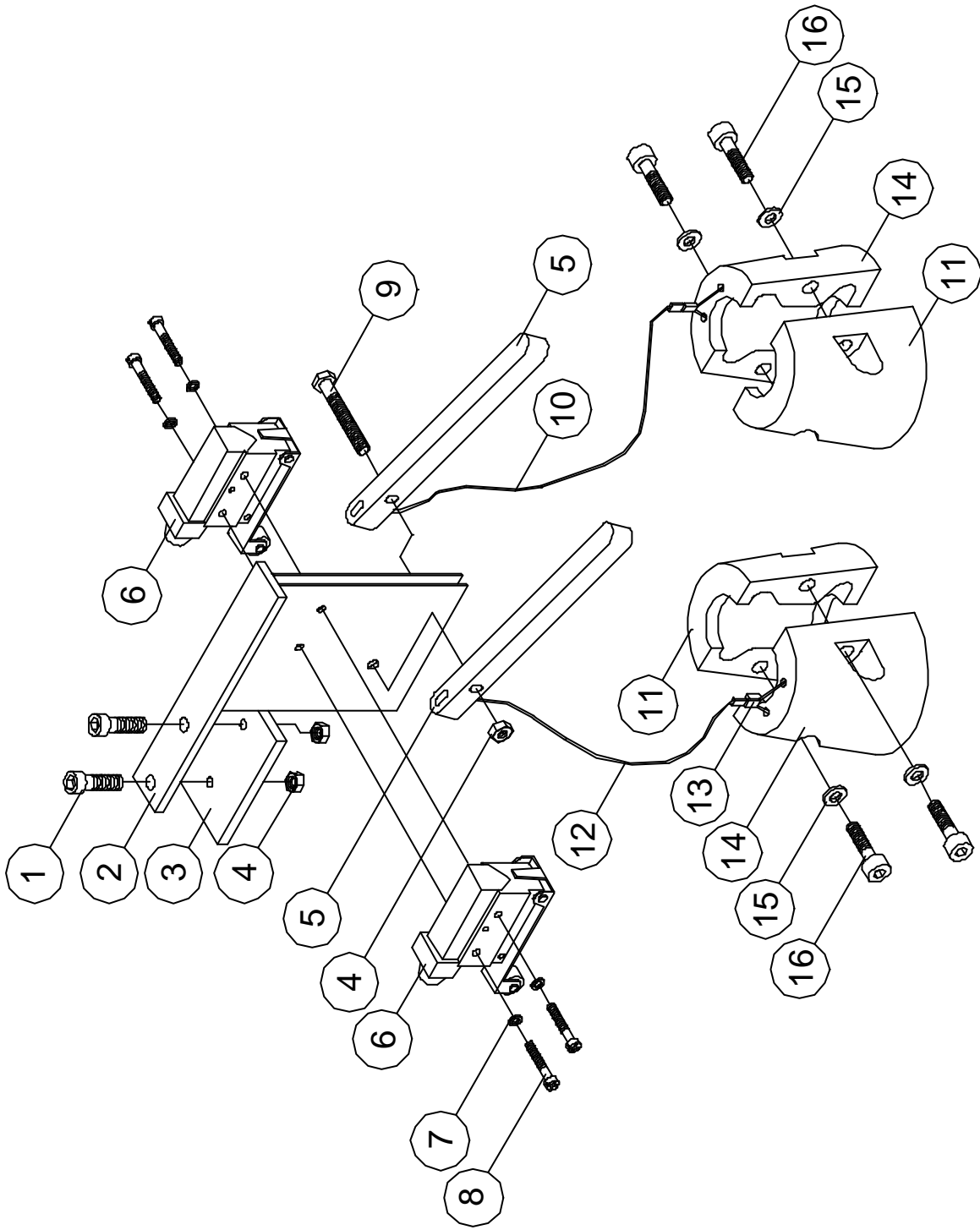
| NO. | PART NUMBER | DESCRIPTION | QTY 15T (33000lbs) | | |
|-----|-------------|-----------------------------------|-----------------------|------|------|
| | | | 20ft | 30ft | 40ft |
| 01 | 104963 | Reducing Motor | 1 | 1 | 1 |
| 02 | 201679 | Pinion <M3.5×23T 63L> | 1 | 1 | 1 |
| 03 | 205183 | Trolley Drive Gear <M3.5×70T×50L> | 1 | 1 | 1 |
| 04 | 400984 | Key <t16×10×60L> | 1 | 1 | 1 |
| 05 | 265218 | Transmission Shaft <ø80×1254L> | 1 | | |
| | 265217 | Transmission Shaft <ø80×1604L> | | 1 | |
| | 265243 | Transmission Shaft <ø80×1904L> | | | 1 |
| 06 | 400954 | Key <t16×10×90L> | 2 | 2 | 2 |
| 07 | 407811 | Bearing <6216 Z> | 8 | 8 | 8 |
| 08 | 400918 | Retaining Ring <S-80> | 4 | 4 | 4 |
| 09 | 205077 | Transmission Wheel <ø226×90L> | 2 | 2 | 2 |
| 10 | 400910 | Retaining Ring <S-70> | 2 | 2 | 2 |
| 11 | 400013 | Hex. Recess Bolt <M8×1.25×25L> | 1 | 1 | 1 |
| 12 | 266081 | Hoist Frame | 1 | | |
| | 266082 | | | 1 | |
| | 266083 | | | | 1 |
| 13 | 205467 | Coupling (B) <ø34×ø21×73L> | 1 | 1 | 1 |
| 14 | 407814 | Bearing <6220 ZZ> | 1 | 1 | 1 |
| 15 | 266881 | Drum <ø296×ø261×971L> | 1 | | |
| | 266882 | Drum <ø296×ø261×1281L> | | 1 | |
| | 266883 | Drum <ø296×ø261×1591L> | | | 1 |
| 16 | 263041 | Drum Shaft <ø35×734L> | 1 | | |
| | 263042 | Drum Shaft <ø40×1044L> | | 1 | |
| | 263043 | Drum Shaft <ø45×1354L> | | | 1 |
| 17 | 205468 | Coupling <ø48×ø28×62L> | 1 | 1 | 1 |
| 18 | 400910 | Retaining Ring <S-70> | 2 | 2 | 2 |
| 19 | 407833 | Bearing <6214 Z> | 4 | 4 | 4 |
| 20 | 205177 | Plain Wheel <ø226×90L> | 2 | 2 | 2 |
| 21 | 265418 | Plain Shaft <ø80×1254L> | 1 | | |
| | 265417 | Plain Shaft <ø80×1604L> | | 1 | |
| | 265443 | Plain Shaft <ø80×1904L> | | | 1 |
| 22 | 400461 | Hex. Recess Bolt <M20×2.5×35L> | 4 | 4 | 4 |
| 23 | 264055 | Keeper | 2 | 2 | 2 |
| 24 | 400098 | Spring Washer <M16> | 4 | 4 | 4 |
| 25 | 407803 | Bearing <6017 Z> | 4 | 4 | 4 |
| 26 | 400920 | Retaining Ring <S-85> | 2 | 2 | 2 |
| 27 | 263555 | Sheave <ø285×60L> | 2 | 2 | 2 |
| 28 | 273641 | Guide Rope Bar | 4 | 4 | 4 |
| 29 | 263461 | Load Axle <ø95×424L> | 1 | 1 | 1 |
| 30 | 400634 | Nut <M16×2.0 > | 4 | 4 | 4 |
| 31 | 400099 | Spring Washer <M20> | 4 | 4 | 4 |
| | | | | | |

1-10T LIMIT SWITCH EXPLOSION



LIMIT SWITCH ASSEMBLY B.O.M

| NO. | PART NUMBER | DESCRIPTION | QTY | QTY | QTY |
|-----|-------------|---------------------------------|--------------------------------|---------------------------------|-------------------------------------|
| | | | 1,2T (2200lbs) (4400lbs) | 3,5T (6600lbs) (11000lbs) | 7.5,10T (16500lbs) (22000lbs) |
| 01 | 204893 | Lever Arm | 1 | | |
| | 204891 | | | 1 | |
| | 204892 | | | | 1 |
| 02 | 400084 | Nut <M12×1.75> | 2 | 2 | 2 |
| 03 | 205308 | Tube <ø30×12.5×15L> | 2 | 2 | 2 |
| 04 | 400097 | Spring Washer <M12> | 2 | 2 | 2 |
| 05 | 400023 | Hex. Recess Bolt <M12×1.75×35L> | 2 | 2 | 2 |
| 06 | 205314 | Limit Frame <t3.0×30×47L> | 2 | 2 | |
| | 273701 | Limit Frame <t3.0×30×62L> | | | 2 |
| 07 | 400003 | Hex. Recess Bolt <M5×0.8×16L> | 8 | 8 | 8 |
| 08 | 205313 | Limit Plate <t3.0×40×55L> | 2 | 2 | |
| | 273602 | Limit Plate <t3.0×68×120L> | | | 2 |
| 09 | 300540 | Limit Switch | 2 | 2 | 2 |
| | | | | | |
| | | | | | |
| | | | | | |
| | | | | | |
| | | | | | |
| | | | | | |
| | | | | | |
| | | | | | |
| | | | | | |
| | | | | | |
| | | | | | |
| | | | | | |
| | | | | | |
| | | | | | |

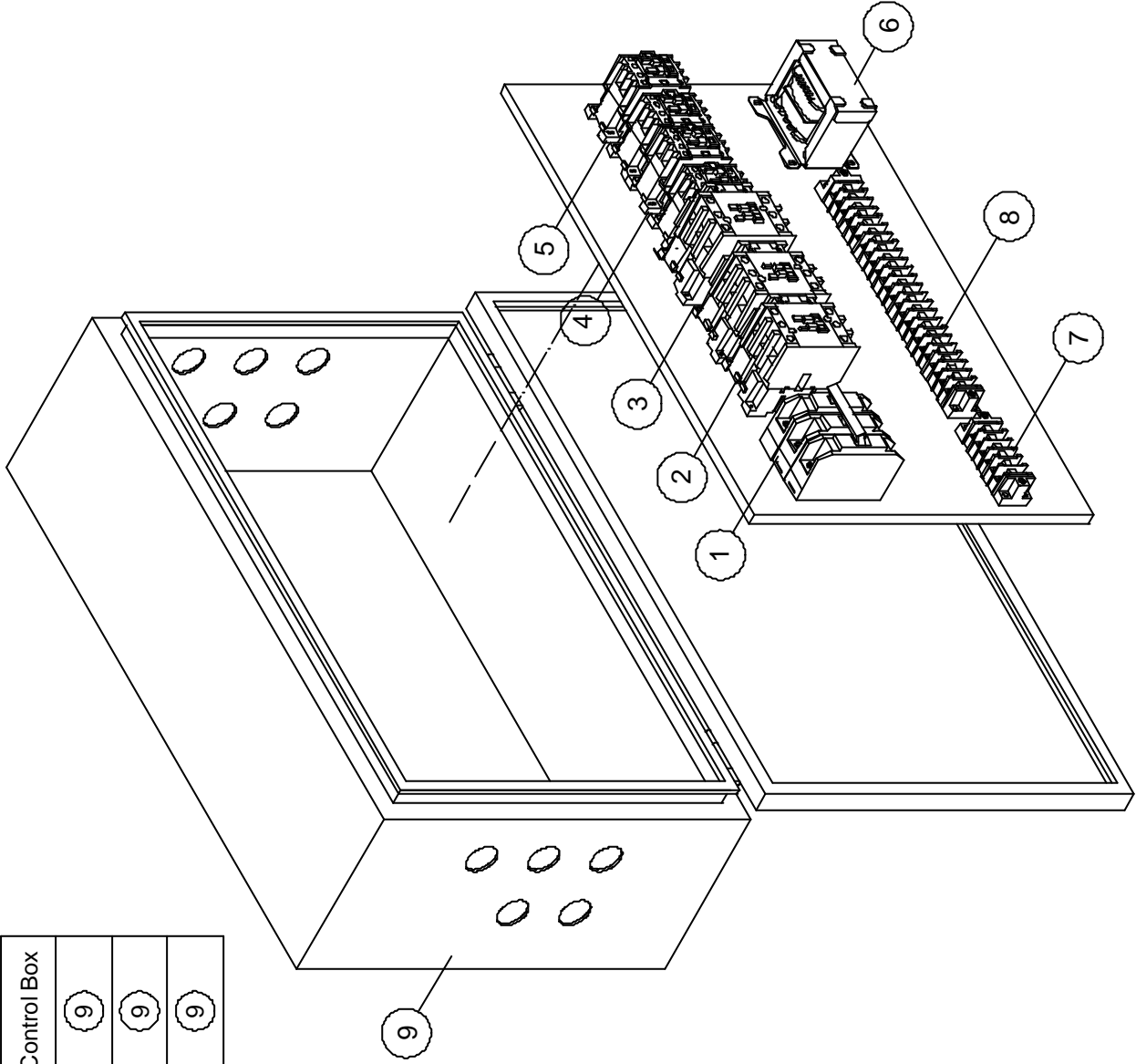


15T LIMIT SWITCH EXPLOSION

LIMIT SWITCH ASSEMBLY B.O.M

| NO. | PART NUMBER | DESCRIPTION | QTY 15T (33000lbs) |
|-----|-------------|---------------------------------|--------------------------|
| 01 | 400007 | Hex. Recess Bolt <M6×1.0×20L> | 2 |
| 02 | 205340 | Limit Frame <t5.0×84×110> | 1 |
| 03 | 205343 | Stator <t6.0×38×64L> | 1 |
| 04 | 400087 | Lock Nut <M6×1.0> | 3 |
| 05 | 205342 | Limit Stick <t12×12×145L> | 2 |
| 06 | 300534 | Limit Switch <AZ-7121> | 2 |
| 07 | 400092 | Spring Washer <M4> | 4 |
| 08 | 400617 | Cross Headed Screw <M4×0.7×25L> | 4 |
| 09 | 400027 | Hex. Recess Bolt <M6×1.0×45L> | 1 |
| 10 | 403001 | Wire Rope ø2×1000L | 1 |
| 11 | 205339 | Counter Weight B | 2 |
| 12 | 403001 | Wire Rope ø2×850L | 1 |
| 13 | 300294 | AL. Setting Sleeve <3mm> | 8 |
| 14 | 205338 | Counter Weight A | 2 |
| 15 | 400095 | Spring Washer <M8> | 4 |
| 16 | 400013 | Hex. Recess Bolt <M8×1.25×25L> | 4 |
| | | | |
| | | | |
| | | | |
| | | | |
| | | | |
| | | | |
| | | | |

| | Single Speed | Dual Speed | Control Box |
|------------|--------------|------------|-------------|
| Hoisting | ○ | | ⑨ |
| Traversing | ○ | | ⑨ |
| Travelling | ○ | | ⑨ |



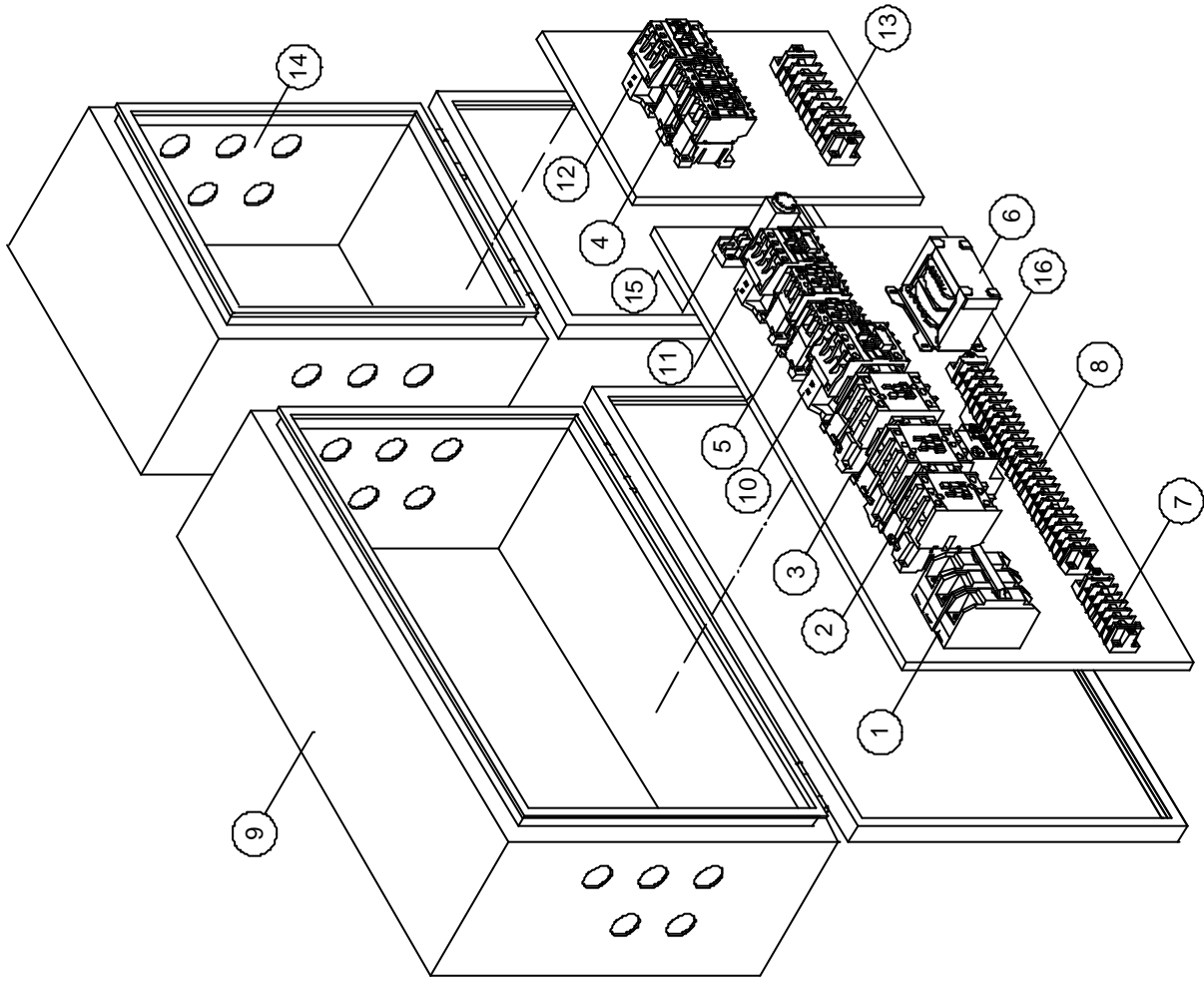
1-3T SINGLE SPEED ELECTRIC EXPLOSION

| | Single Speed | Dual Speed | Control Box |
|------------|-----------------------|------------|--------------------------|
| Hoisting | <input type="radio"/> | | <input type="radio"/> 9 |
| Traversing | <input type="radio"/> | | <input type="radio"/> 9 |
| Travelling | <input type="radio"/> | | <input type="radio"/> 14 |

| | Single Speed | Dual Speed | Control Box |
|------------|-----------------------|-----------------------|--------------------------|
| Hoisting | | <input type="radio"/> | <input type="radio"/> 9 |
| Traversing | <input type="radio"/> | | <input type="radio"/> 9 |
| Travelling | <input type="radio"/> | | <input type="radio"/> 14 |

| | Single Speed | Dual Speed | Control Box |
|------------|-----------------------|-----------------------|--------------------------|
| Hoisting | | <input type="radio"/> | <input type="radio"/> 9 |
| Traversing | | <input type="radio"/> | <input type="radio"/> 9 |
| Travelling | <input type="radio"/> | | <input type="radio"/> 14 |

| | Single Speed | Dual Speed | Control Box |
|------------|--------------|-----------------------|--------------------------|
| Hoisting | | <input type="radio"/> | <input type="radio"/> 9 |
| Traversing | | <input type="radio"/> | <input type="radio"/> 9 |
| Travelling | | <input type="radio"/> | <input type="radio"/> 14 |



5-15T SINGLE SPEED & 1-15T DUAL SPEED ELECTRIC EXPLOSION

ELECTRIC ASSEMBLY B.O.M.

(S)=Single Speed; (D)=Dual Speed

| NO. | PART NUMBER | DESCRIPTION | QTY 1,2T 2200lbs 4400lbs | | | QTY 3T 6600lbs | | | QTY 5T 11000lbs | | |
|-----|-------------|--|-----------------------------------|------------|------------|----------------------|------------|------------|-----------------------|------------|------------|
| | | | S | D | | S | D | | S | D | |
| | | | 230/460 (V) | 230 (V) | 460 (V) | 230/460 (V) | 230 (V) | 460 (V) | 230/460 (V) | 230 (V) | 460 (V) |
| 01 | 300896 | No Fuse Breaker | 1 | 1 | 1 | 1 | 1 | 1 | 1 | 1 | |
| 02 | 301153 | Magnetic Contactor For “Emergency Stop” | 1 | 1 | 1 | | | | | | |
| | 300059 | | | | | 1 | 1 | 1 | | 1 | |
| | 300055 | | | | | | | | 1 | 1 | |
| 03 | 301153 | Magnetic Contactor For “Hoist” | 2 | 2 | 2 | | | | | | |
| | 300059 | | | | | 2 | 2 | 2 | | 2 | |
| | 300055 | | | | | | | | 2 | 2 | |
| 04 | 300028 | Reversing Contactor For “Traveling” | 2 | 2 | 2 | | | | | | |
| | 300051 | | | | | 2 | 2 | 2 | 2 | 2 | |
| 05 | 300028 | Reversing Contactor For “Traversing” | 2 | 2 | 2 | 2 | 2 | 2 | 2 | 2 | |
| 06 | 301059 | Control Transformer | 1 | 1 | 1 | 1 | 1 | 1 | 1 | 1 | |
| 07 | 300658 | Terminal Blocks | 1 | | | 1 | | | 1 | | |
| | 300647 | | | 1 | 1 | | 1 | 1 | | 1 | 1 |
| 08 | 300664 | Terminal Blocks | 1 | 1 | 1 | 1 | 1 | 1 | 1 | 1 | |
| 09 | 301422 | Electric Control Panel | 1 | 1 | 1 | 1 | | | 1 | | |
| | 301424 | | | | | | 1 | 1 | | 1 | 1 |
| 10 | 300043 | Magnetic Contactor For Fast” (Hoisting) | | 1 | 1 | | 1 | 1 | | 1 | |
| | 300047 | | | | | | | | 1 | | |
| 11 | 300037 | Magnetic Contactor For “Fast” (Traversing) | | 1 | 1 | | 1 | 1 | | 1 | 1 |
| 12 | 300037 | Magnetic Contactor For “Fast” (Traveling) | | 1 | 1 | | 1 | 1 | | 1 | 1 |
| 13 | 300657 | Terminal Blocks | | 1 | 1 | | 1 | 1 | 1 | 1 | 1 |
| 14 | 301336 | Electric Control Panel | | 1 | 1 | | 1 | 1 | 1 | 1 | 1 |
| | | | | | | | | | | | |
| | | | | | | | | | | | |

ELECTRIC ASSEMBLY B.O.M.

(S)=Single Speed; (D)=Dual Speed

| NO. | PART NUMBER | DESCRIPTION | QTY 7.5T 16500 lbs | | | QTY 10T 22000 lbs | | | QTY 15T 33000 lbs | | |
|-----|-------------|--|--------------------------|------------|------------|-------------------------|------------|------------|-------------------------|------------|------------|
| | | | S | D | | S | D | | S | D | |
| | | | 230/460 (V) | 230 (V) | 460 (V) | 230/460 (V) | 230 (V) | 460 (V) | 230/460 (V) | 230 (V) | 460 (V) |
| 01 | 300894 | No Fuse Breaker | 1 | 1 | 1 | 1 | 1 | 1 | 1 | 1 | |
| 02 | 300018 | Magnetic Contactor | 1 | 1 | | | | 1 | | 1 | |
| | 300007 | For | | | | 1 | 1 | | 1 | | |
| | 300055 | “Emergency Stop” | | | 1 | | | | | | |
| 03 | 300018 | Magnetic Contactor | 2 | 2 | | | | 2 | | 2 | |
| | 300007 | For “Hoist” | | | | 2 | 2 | | 2 | 2 | |
| | 300055 | | | | 2 | | | | | | |
| 04 | 301153 | Reversing Contactor For “Traveling” | 2 | 2 | 2 | 2 | 2 | 2 | 2 | 2 | |
| 05 | 300051 | Reversing Contactor | 2 | 2 | 2 | | | | | | |
| | 301153 | For “Traversing” | | | | 2 | 2 | 2 | 2 | 2 | |
| 06 | 301056 | Control Transformer | 1 | 1 | 1 | | | | | | |
| | 301076 | | | | | 1 | 1 | 1 | 1 | 1 | |
| 07 | 300659 | Terminal Blocks | 1 | | | | | | | | |
| | 300648 | | | | | 1 | | 1 | | | |
| | 300656 | | | 1 | 1 | | | 1 | | 1 | |
| | 300650 | | | | | | 1 | | 1 | | |
| 08 | 300664 | Terminal Blocks | 1 | 1 | 1 | 1 | 1 | 1 | 1 | 1 | |
| 09 | 301424 | Electric Control Panel | 1 | 1 | 1 | 1 | | | 1 | | |
| | 301425 | | | | | | 1 | 1 | | 1 | |
| 10 | 300022 | Magnetic Contactor For “Fast” (Hoisting) | | 1 | | | | 1 | | 1 | |
| | 301167 | | | | | | 1 | | 1 | | |
| | 300047 | | | | 1 | | | | | | |
| 11 | 300037 | Magnetic Contactor For “Fast” (Traversing) | | 1 | 1 | | | | | | |
| | 300043 | | | | | | 1 | 1 | | 1 | |
| 12 | 300043 | Magnetic Contactor For “Fast” (Traveling) | | 1 | 1 | | | 1 | 1 | | |
| 13 | 300657 | Terminal Blocks | 1 | 1 | 1 | 1 | 1 | 1 | 1 | 1 | |
| 14 | 301336 | Electric Control Panel | 1 | 1 | 1 | 1 | 1 | 1 | 1 | 1 | |
| 15 | 300403 | Thermal Overload Relay | | | | | 1 | | 1 | | |
| | 300401 | | | | | | | 1 | | 1 | |
| 16 | 300271 | Timer | | | | | 1 | 1 | | 1 | |