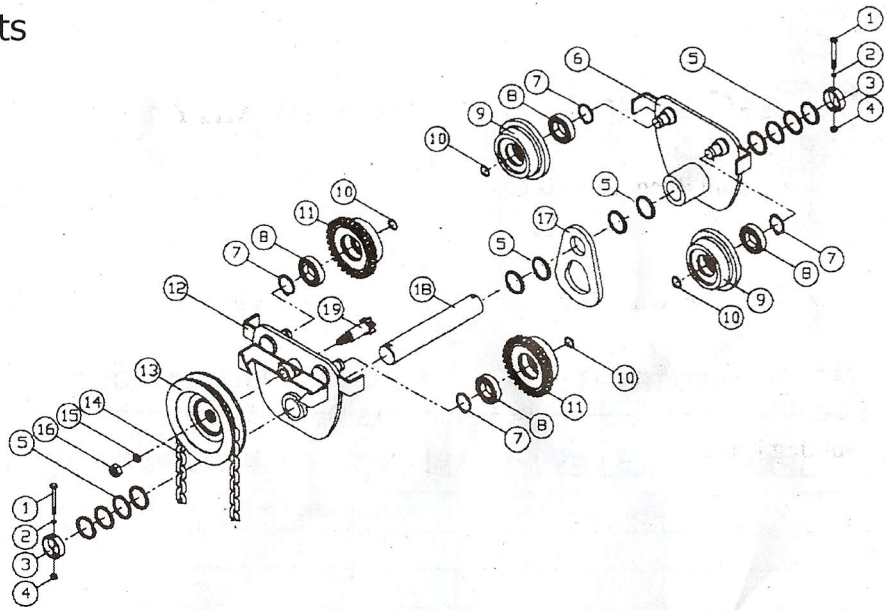
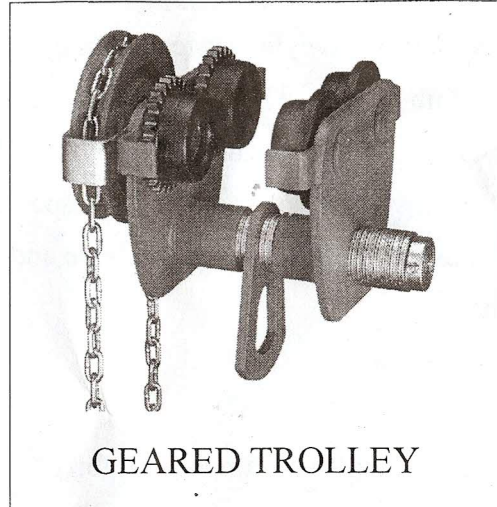


Parts

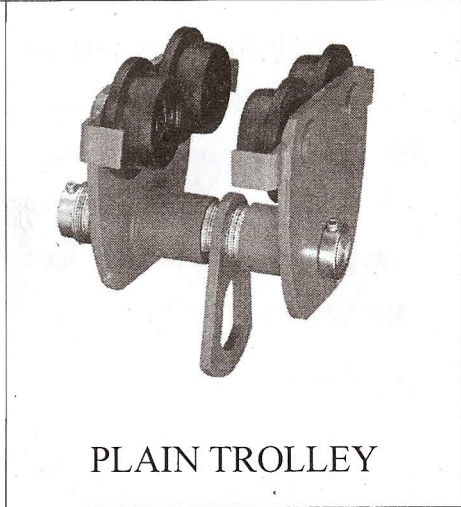


GEARED TROLLEYS & PLAIN TROLLEYS

CAPACITIES: 0.5 TO 10 TONS



GEARED TROLLEY



PLAIN TROLLEY

No.	Description	Quantity													
		GT-50	PT-50	GT-100	PT-100	GT-200	PT-200	GT-300	PT-300	GT-500	PT-500	GT-750	PT-750	GT-1000	PT-1000
1	BOLT	2	2	2	2	2	2	2	2	2	2	2	2	2	2
2	WASHER	2	2	2	2	2	2	2	2	2	2	2	2	2	2
3	THIMBLE	2	2	2	2	2	2	2	2	2	2	2	2	2	2
4	NUT	2	2	2	2	2	2	2	2	2	2	2	2	2	2
5	SPACER WASHER	40	40	30	30	30	30	40	40	30	30	20	20	20	20
6	RIGHT PLATE ASSEMBLY	1	1	1	1	1	1	1	1	1	1	1	1	1	1
7	CIRCLIPS FOR HOLES	4	4	4	4	4	4	4	4	4	4	4	4	4	4
8	RADIAL BALL BEARINGS	4	4	4	4	4	4	4	4	4	4	4	4	4	4
9	AUXILIARY WHEELS	2	4	2	4	2	4	2	4	2	4	2	4	2	4
10	CIRCLIPS FOR SHAFT	4	4	4	4	4	4	4	4	4	4	4	4	4	4
11	MAIN WHEELS	2	0	2	0	2	0	2	0	2	0	2	0	2	0
12	LEFT PLATE ASSEMBLY	1	1	1	1	1	1	1	1	1	1	1	1	1	1
13	HAND WHEEL	1	0	1	0	1	0	1	0	1	0	1	0	1	0
14	HAND CHAIN	1	0	1	0	1	0	1	0	1	0	1	0	1	0
15	WASHER	1	0	1	0	1	0	1	0	1	0	1	0	1	0
16	NUT	1	0	1	0	1	0	1	0	1	0	1	0	1	0
17	LADING HANGER PLATE	1	1	1	1	1	1	1	1	1	1	1	1	1	1
18	LOADING AXLE	1	1	1	1	1	1	1	1	1	1	1	1	1	1
19	ACTUATE SHAFT	1	0	1	0	1	0	1	0	1	0	1	0	1	0

Serial No. BPT803621

Inspection Certificate

It is hereby certified that this product was manufactured under our single-unit control of quality and was passed in strict inspection in accordance with the inspection standard.

C.W.Hwang
Chief inspector

WARNING

1. Please read user's manual carefully before start using the product.
2. Overloading is absolute prohibited.
3. Do Not cross or working under the lifting area.
4. You should stop operating immediately when the chain stuck or abnormal and effort of lifting a full load during the operation, Do Not keep on pulling the unit, check the loaded materiel to see if anything entangled with or any problem with the unit itself.
5. Do Not pull the different levels of hand-pulled chain with hand wheel to avoid chain sticking or vibrating.
6. Bearing, gears and rails should be lubricated periodically; check every single fixed parts thoroughly to make sure it's under working order.

